

ADOT Passenger Rail and I-11 Corridor Studies, Project Updates

Scott Omer, PTP

**Arizona Department of Transportation
Multimodal Planning Division, Director**

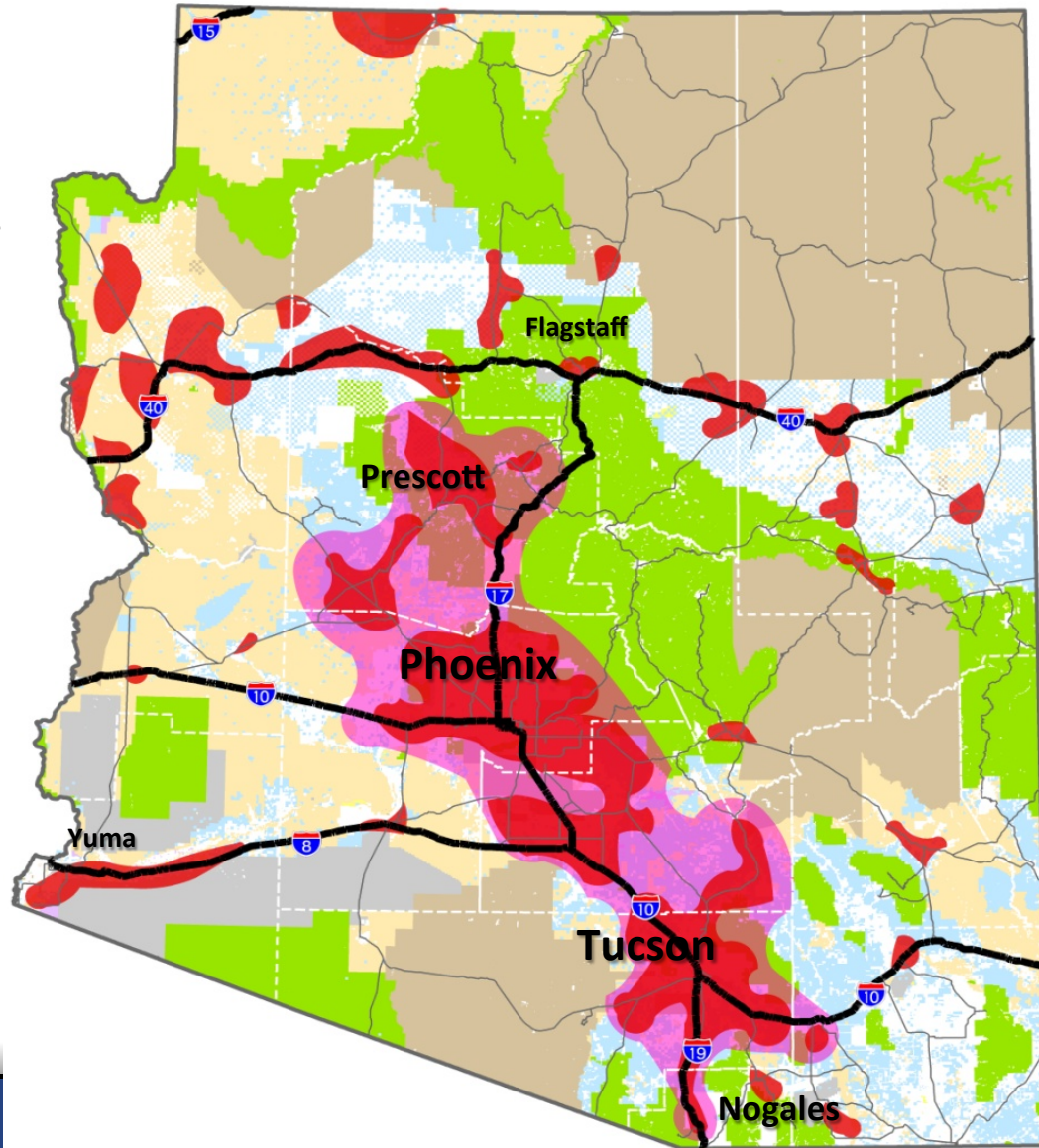
ADOT Passenger Rail Corridor Study

Tucson to Phoenix

Project Update

Sun Corridor Mega Region

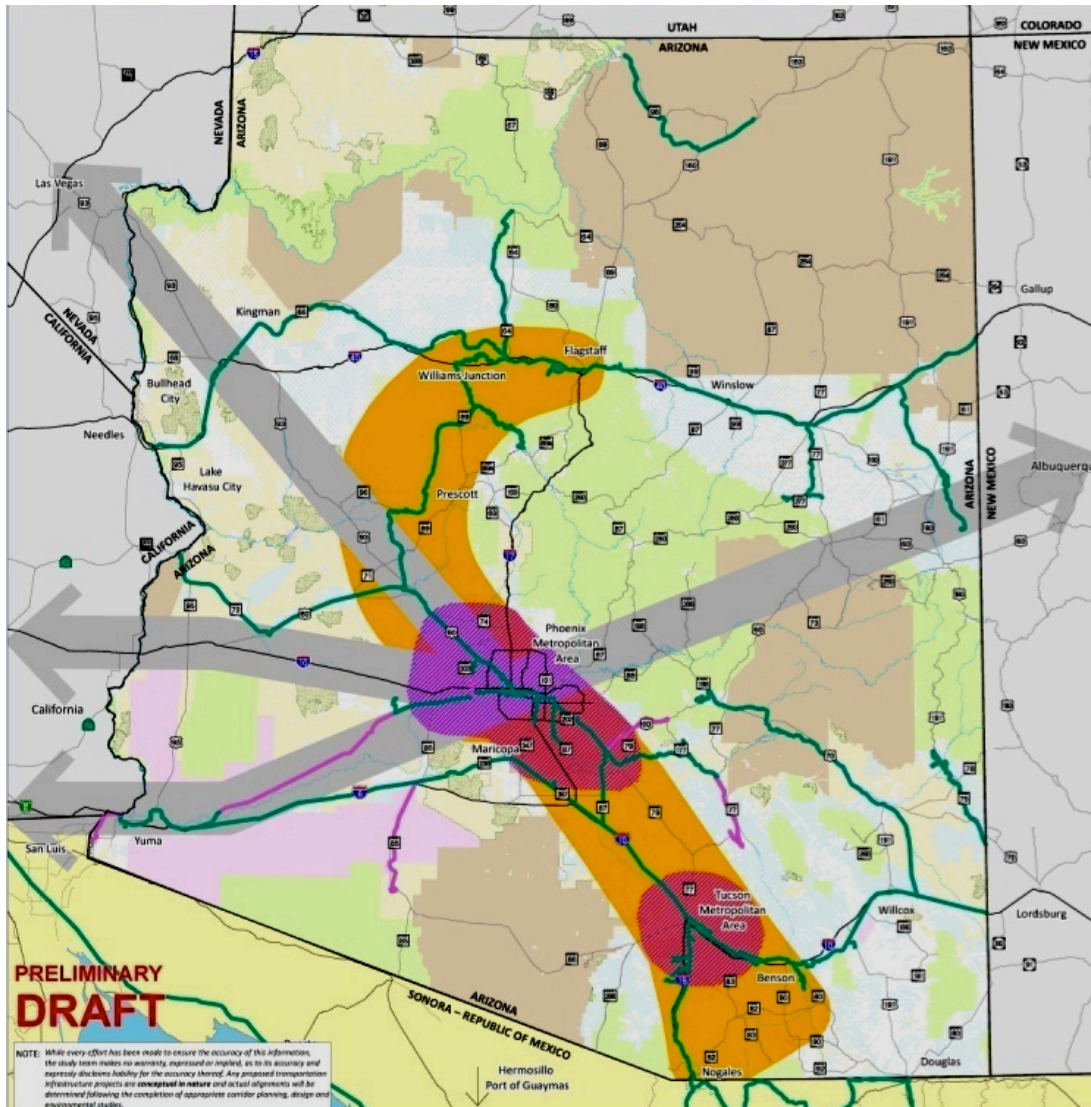
- **Sun Corridor will include 85% of state population by 2050**
 - Two-thirds of housing units yet to be built
 - Half of the Transportation Infrastructure to be built
 - Opportunity for new sustainable urban development



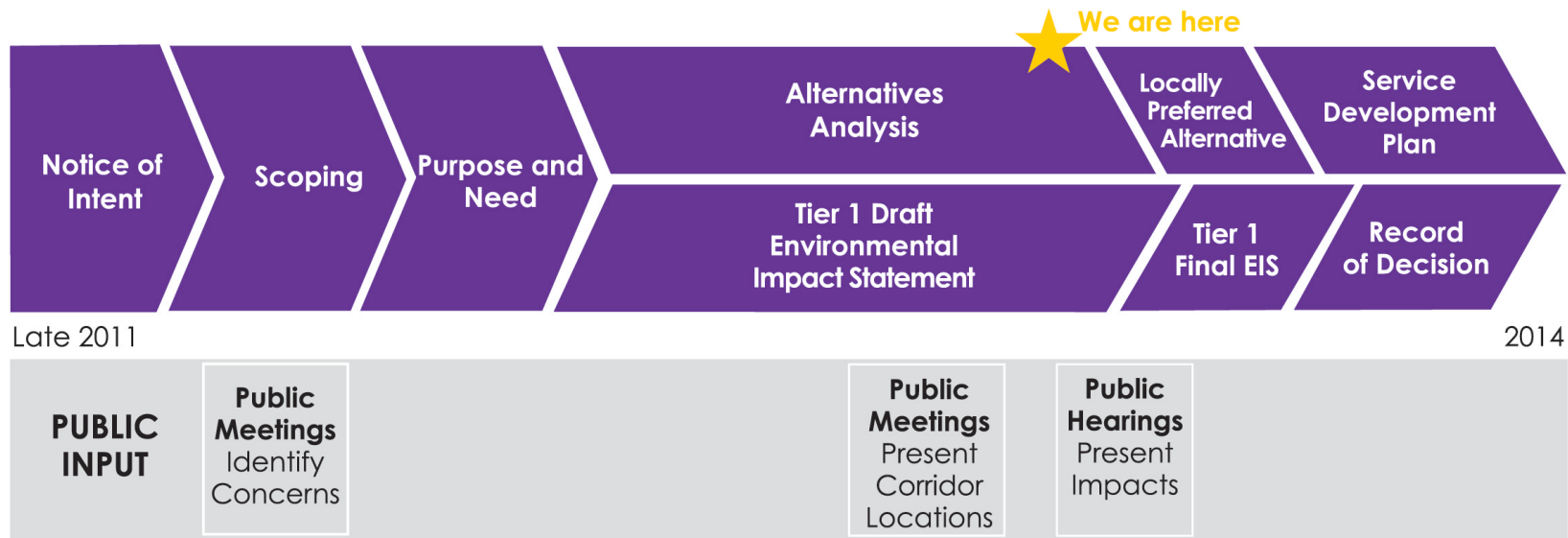
Passenger Rail Vision



- **Statewide Transportation Framework Study**
- **Intercity Rail provides transit backbone for Sun Corridor**



Passenger Rail Corridor Study Process

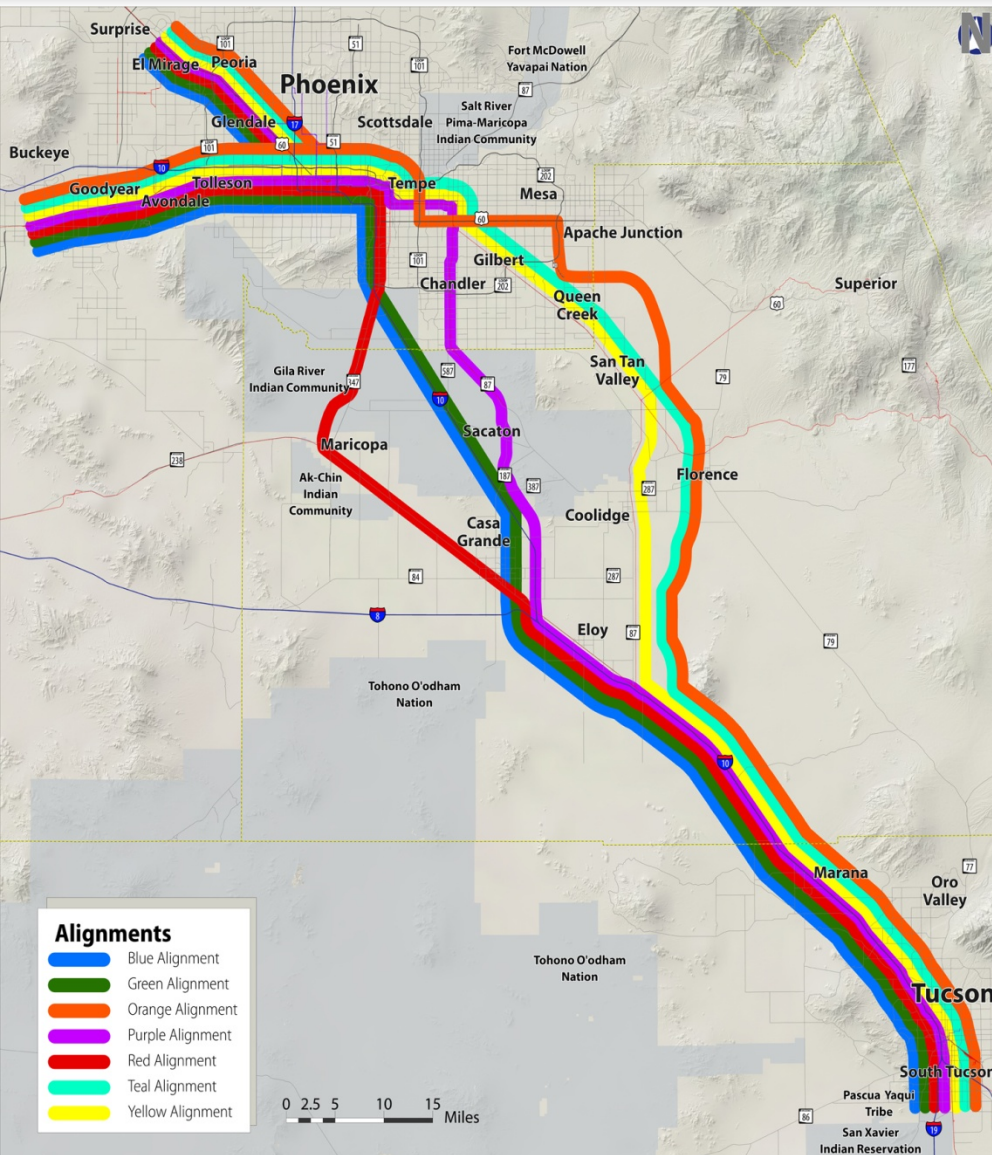


– Deliverables:

- Alternatives Analysis (AA)
- Environmental Impact Statement (Tier 1)
- Service Development Plan

www.azdot.gov/passengerrail





Preliminary Alts

- ▶ **I-10 Bus Alternative (Blue)**
- ▶ **Six (6) Rail Alternatives**
 - ▶ **UPRR Alternative – Share R/W (Yellow)**
 - ▶ **Non-UPRR Alternatives**
 - I-10 (Green)
 - N-S Corridor & US60 (Orange)
 - ▶ **Combination Alternatives**
 - UPRR Southeast Branch (Teal)
 - UPRR Tempe Branch (Red)
 - UPRR Chandler Branch (Purple)



834 Emails Received



9 Media Interviews Conducted



25 Social Media Posts

21 Events and Festivals Attended



31 Do-it-Yourself Kits Distributed



30 Newspaper Coverage/Stories

8,750 ADOT Online Video Views



6 Radio Coverage/Stories



11 Formal Letters Received



8 Public Open Houses



6,785 Completed Comment Forms



3,700 Information Booklets Distributed



21 Television Coverage/Stories



25,449 Website Views

Passenger Rail Outreach

What would be your
preferred travel choice
between Tucson and Phoenix?



77.4%
Train



21.2%
Personal
Vehicle



0.8%
Air

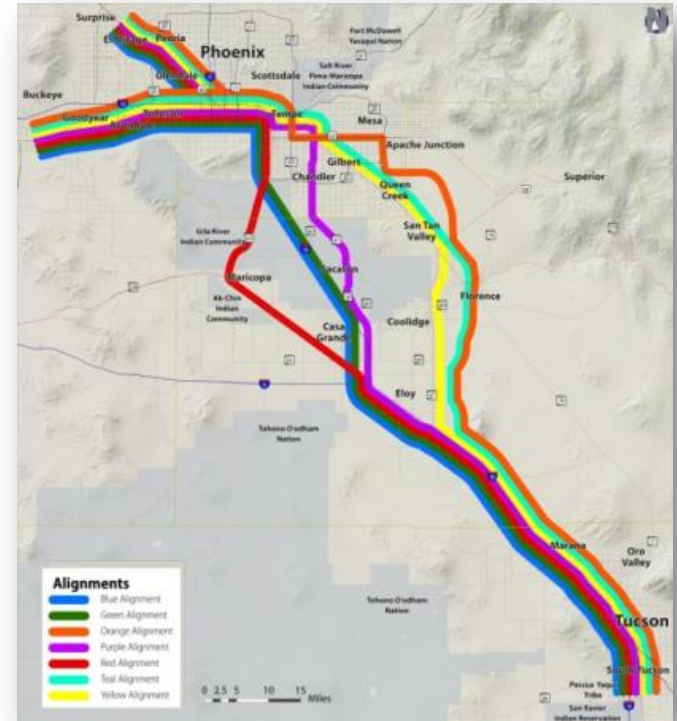
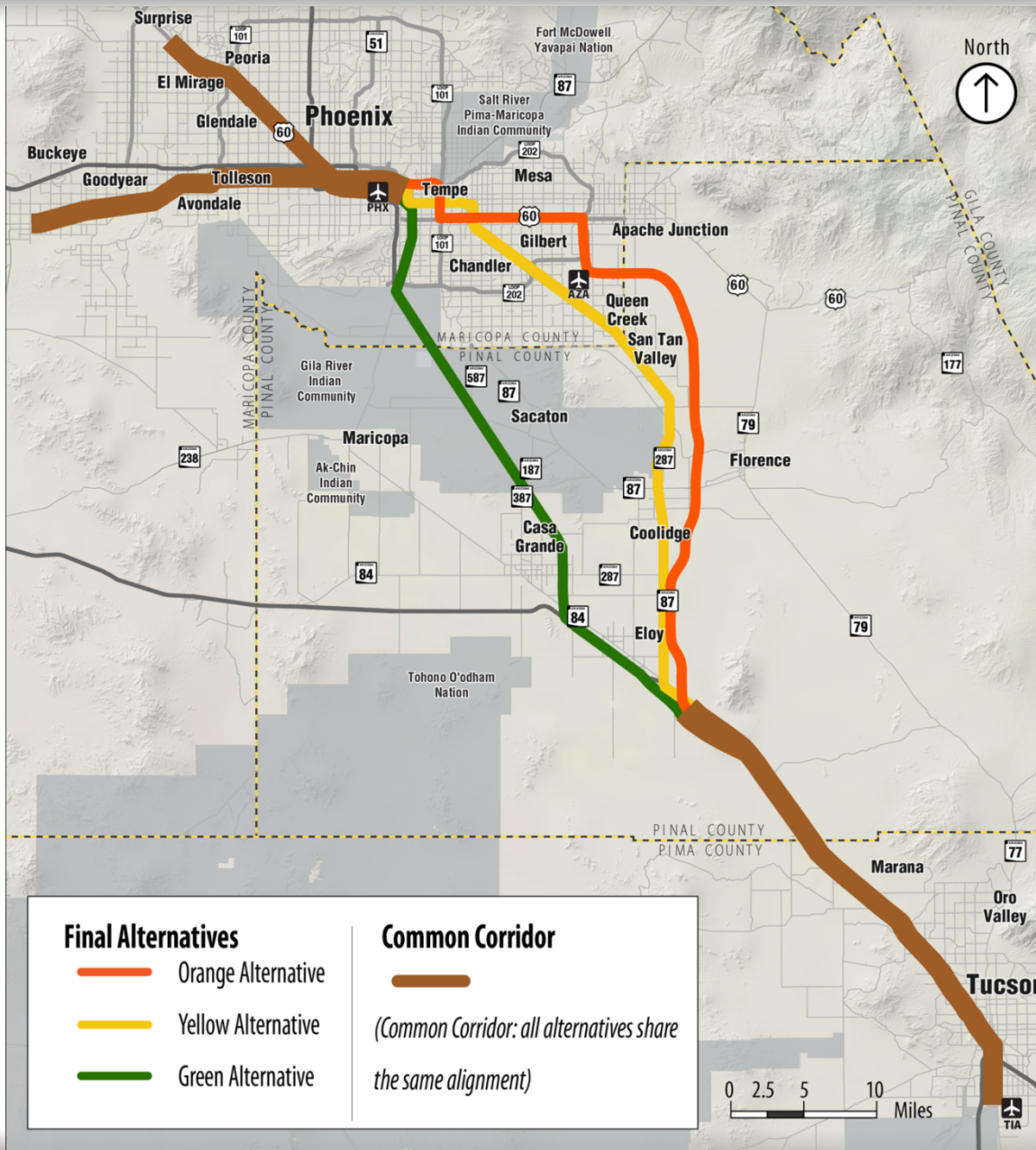


0.6%
Bus



0.3%
Bike

Final Alternatives



Schedule and Next Steps

- Spring 2014: Public Outreach
- May/June 2014: Draft Tier I EIS
- Summer 2014: Final Recommendations



I-11 & Intermountain West Corridor Study

I-11 and Intermountain West Corridor Study: Project Update



In partnership with

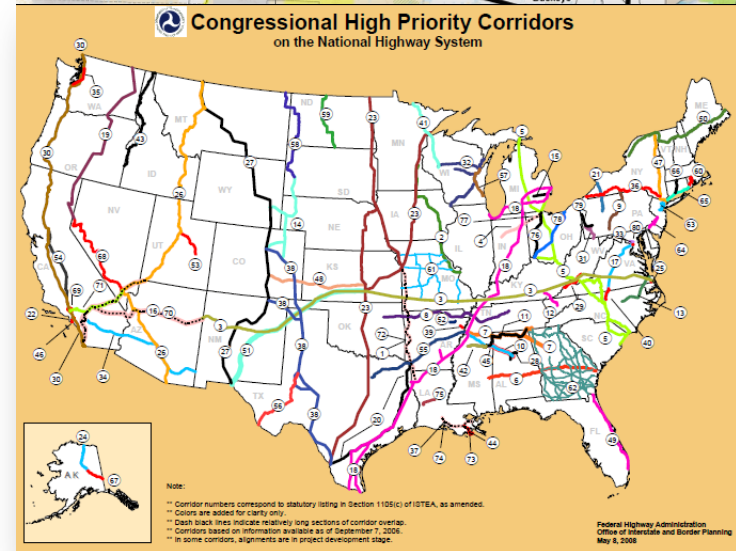


ADOT Multimodal Planning Division

December 6, 2013

A Congressionally Designated Corridor

- ▶ CANAMEX Corridor designated (1995)
- ▶ Corridor advanced through:
 - MAG Hassayampa and Hidden Valley Framework Studies (2006 – 2009)
 - Building a Quality Arizona (bqAZ 2010)
 - NDOT/RTC/NV Boulder City Bypass (2005 and ongoing)
- ▶ CANAMEX along US 93 between Phoenix and Las Vegas designated as future “I-11” in MAP-21 (2012)
- ▶ Arizona and Nevada DOTs signed an interagency agreement and begin a joint planning study (2012+)



What Does this Study Entail?

- ▶ **Two levels of investigation:**

- Detailed corridor planning between Las Vegas and Phoenix

- High-level visioning from Las Vegas to Canada, and from Phoenix to Mexico

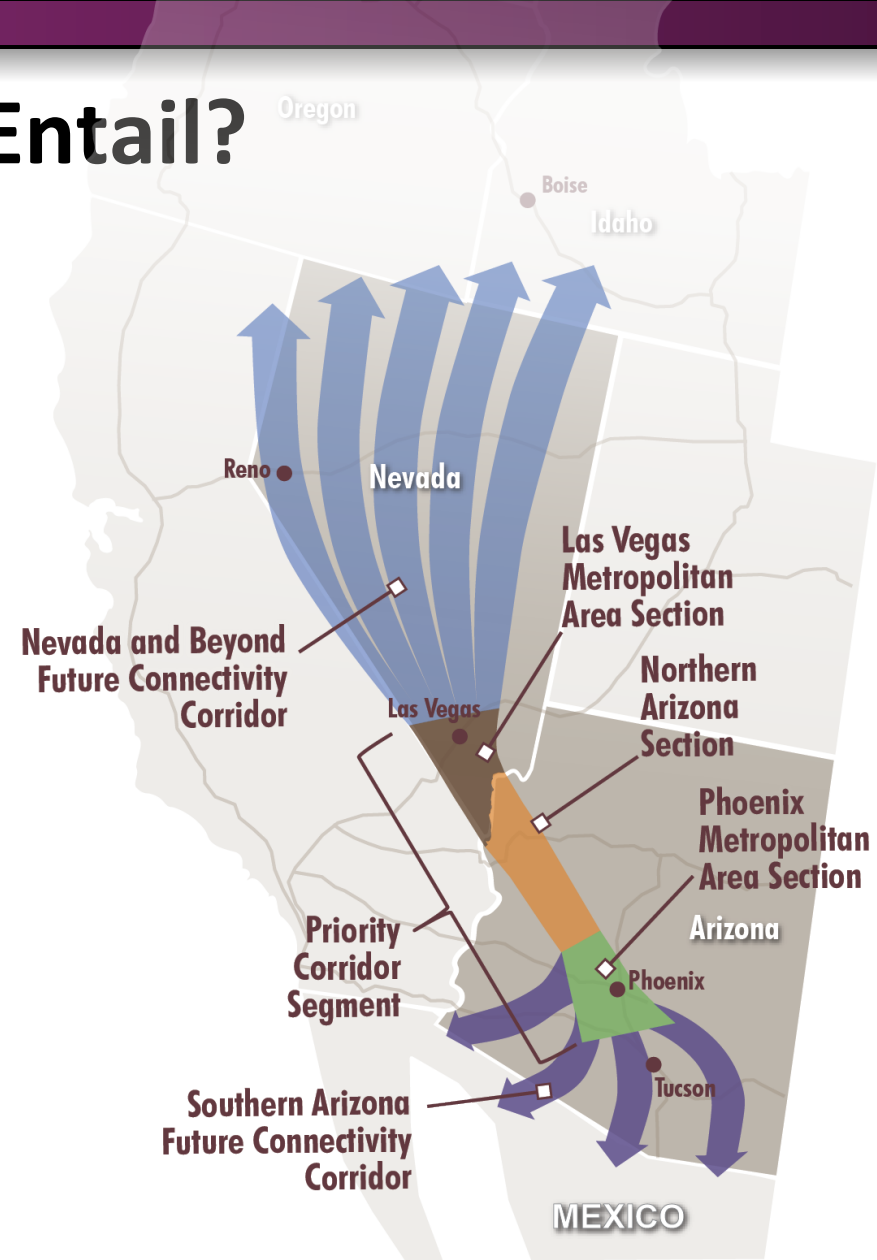
- ▶ **Multimodal consideration**

- ▶ **Stakeholder Outreach**

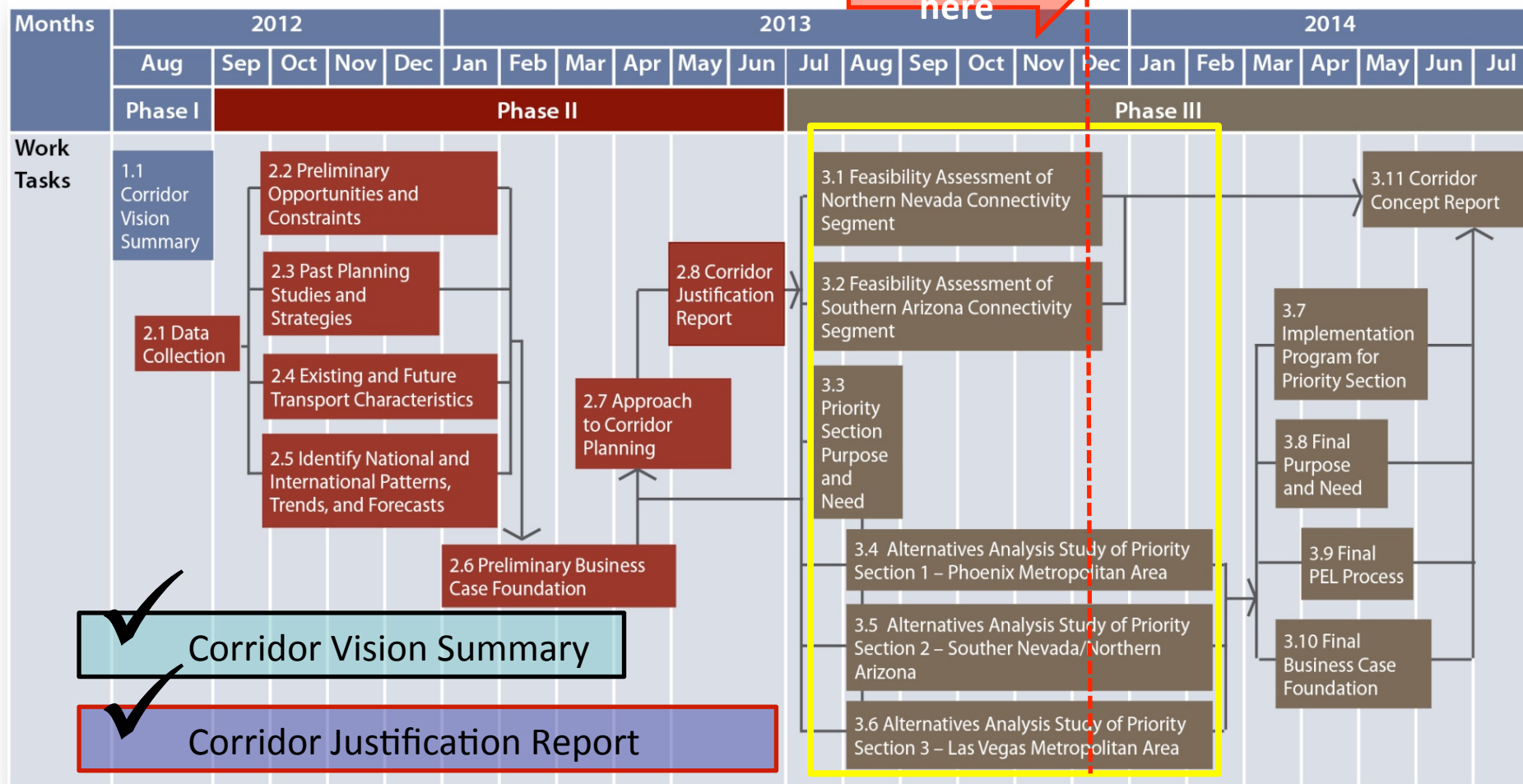
- Stakeholders Partner Group

- Public Outreach

- Tribal Coordination



Setting the Foundation



Select, Define, and Evaluate Corridor Alternatives

Develop Business Case and Implementation Plan

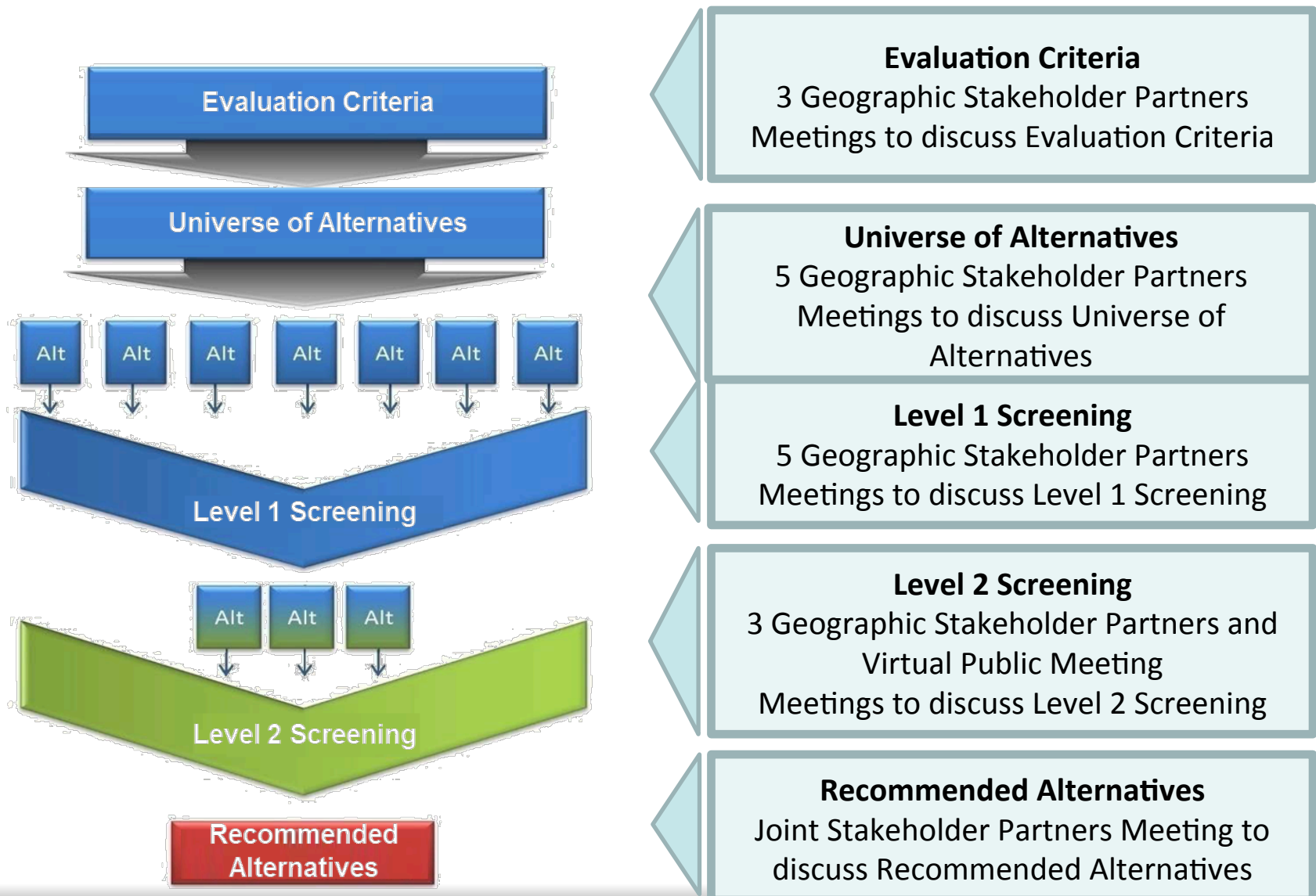
Possible Economic Scenarios Affecting the Corridor



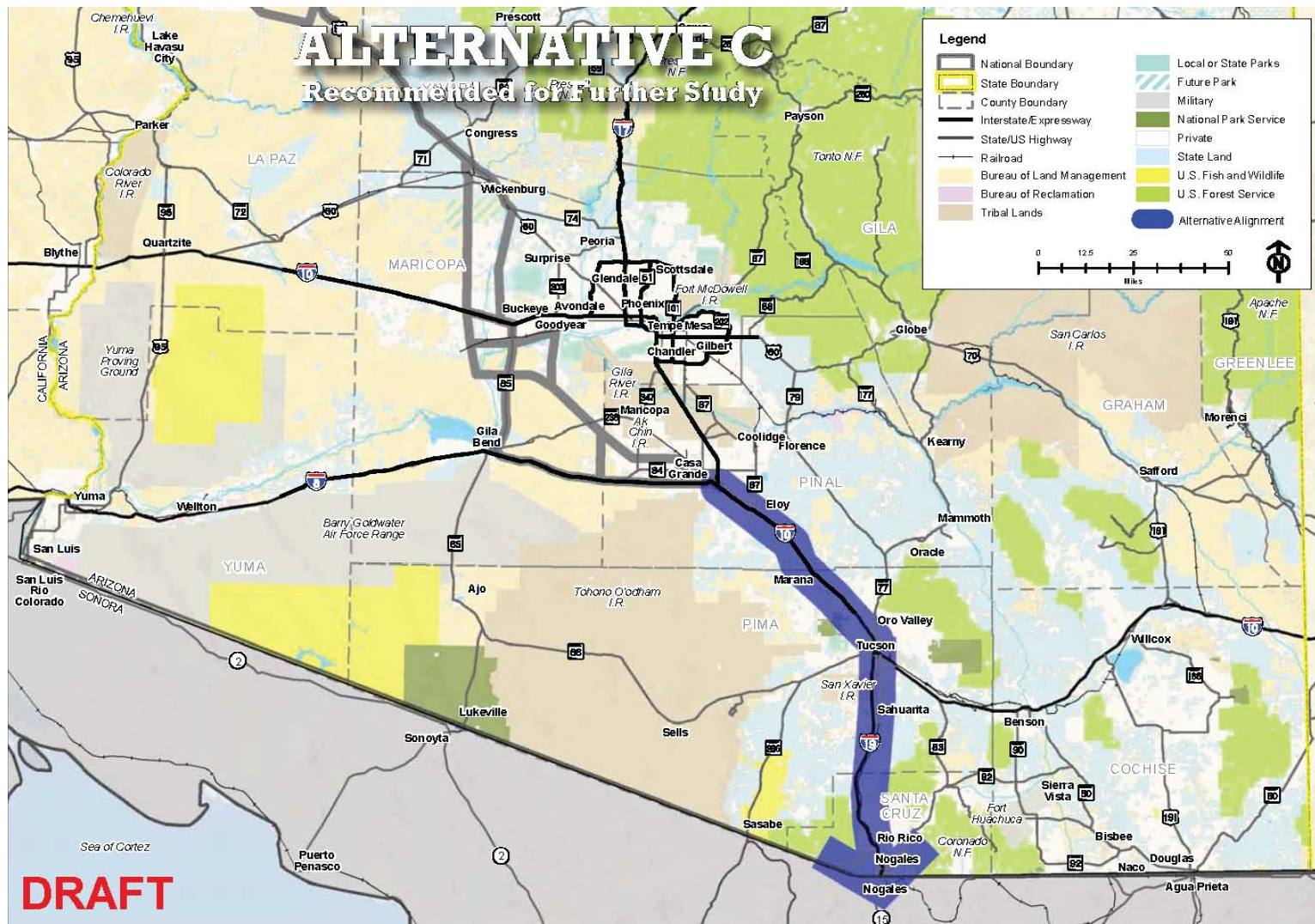
1. **Baseline** (includes Panama Canal widening)
2. **Pacific Rim trade expands** much greater than forecasted
West Coast ports reach capacity and Mexico adds port capacity
Latin American trade remains constant
3. **Latin American trade greatly expands**
Asia trade remains constant
4. **Economic diversification** plans for Arizona and Nevada are realized



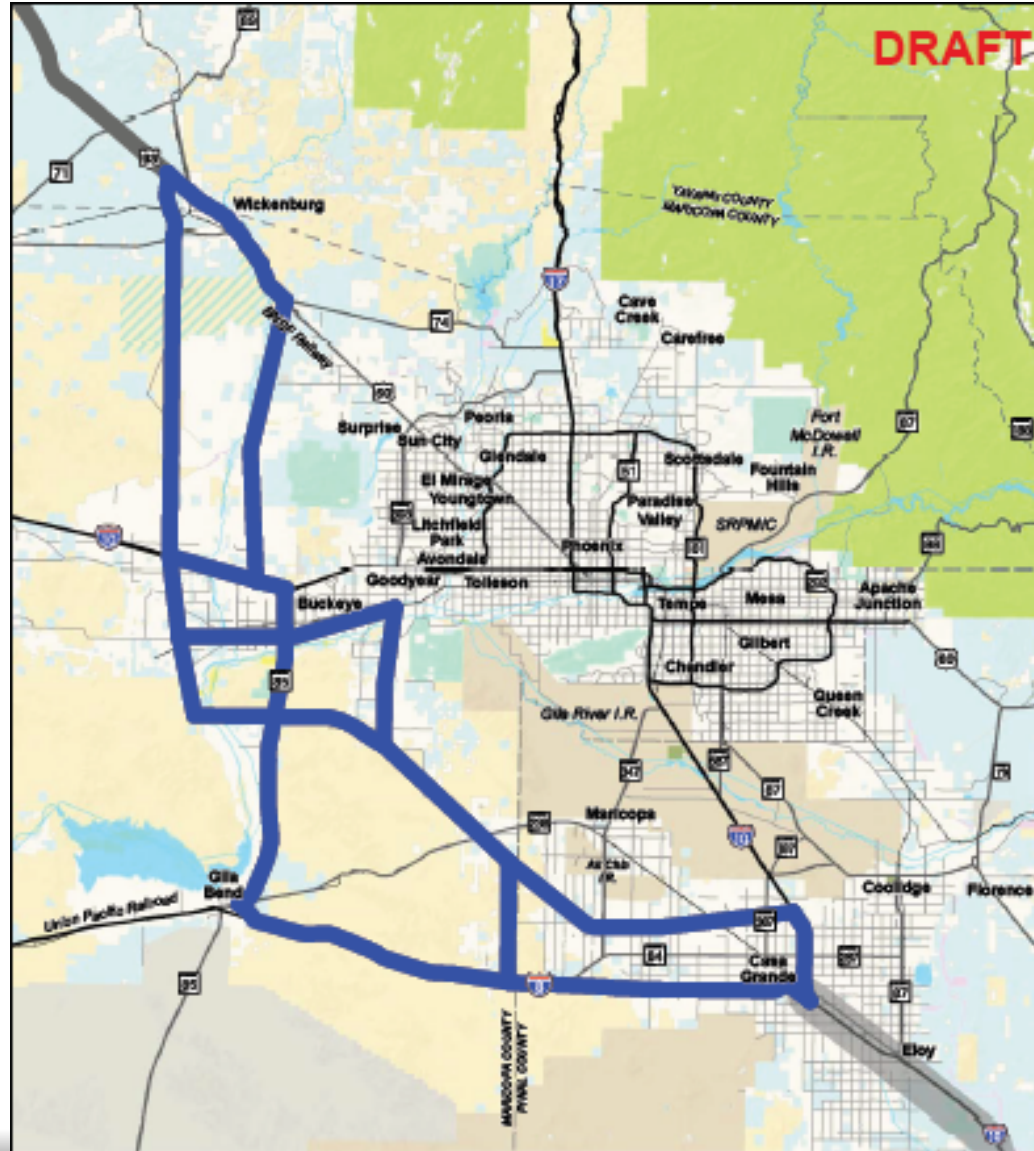
Stakeholder Engagement in Evaluation Process



Southern Arizona Connectivity Segment



Level 2 Evaluation – Phoenix Metro Area

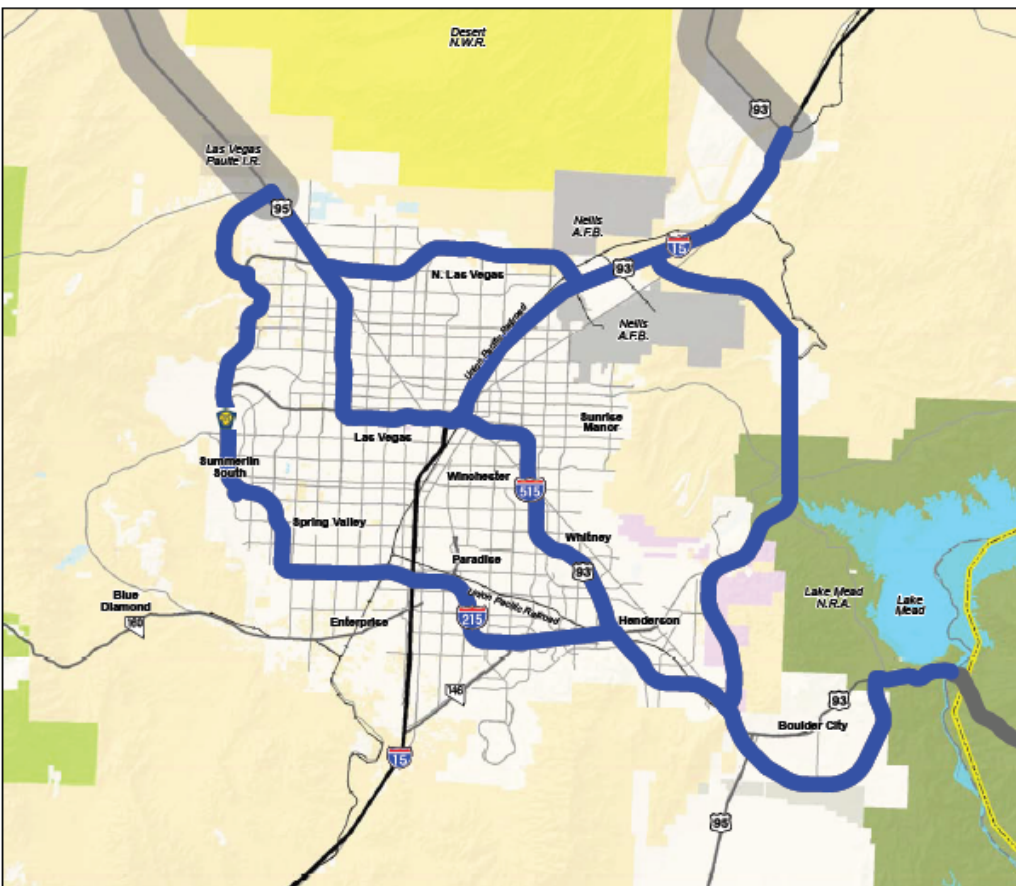


Level 2 Evaluation – Northern AZ/Southern NV

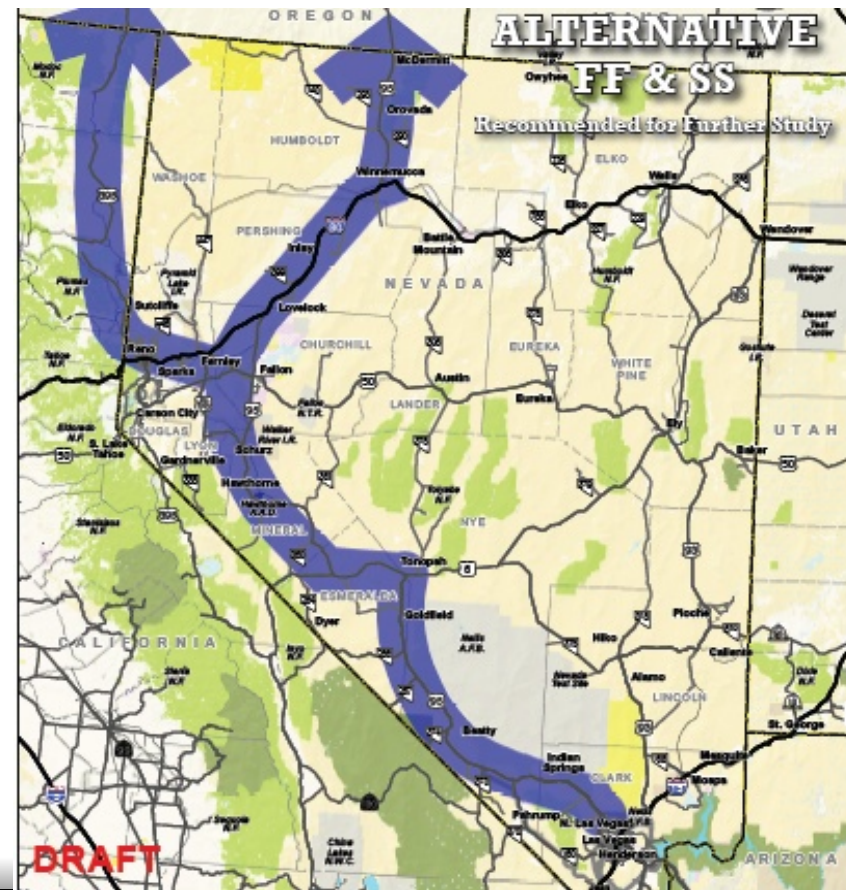


Level 2 Evaluation – Nevada Sections

Las Vegas Area

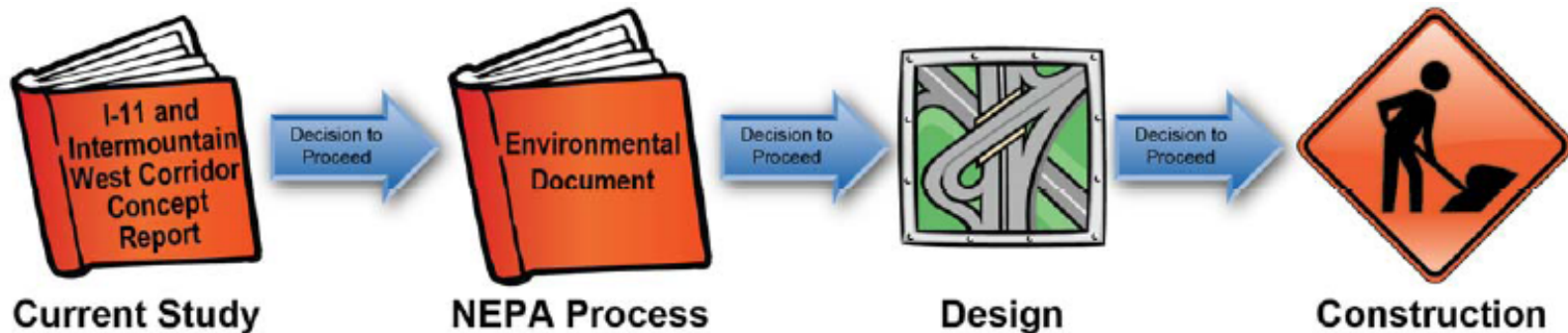


Northern Nevada



Next Steps?

- ▶ Level 2 Screening completed in January 2014
- ▶ Final Recommendations for Feasible Corridor(s) in Spring 2014
- ▶ Public Outreach Spring/Summer 2014
- ▶ Final Business Case in Summer 2014



Study Website: www.i11study.com

