



Regional Infrastructure Update

*Canada-Arizona Business Council
May 21, 2021*

John Halikowski

Director

Arizona Department of Transportation

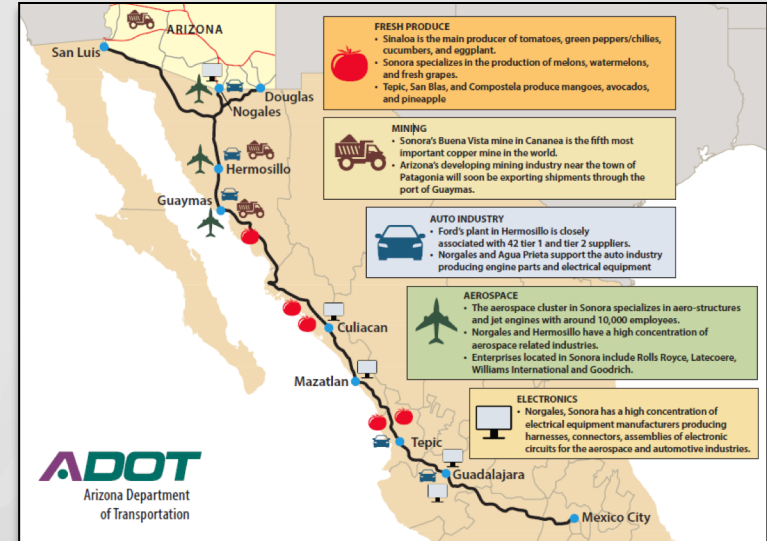
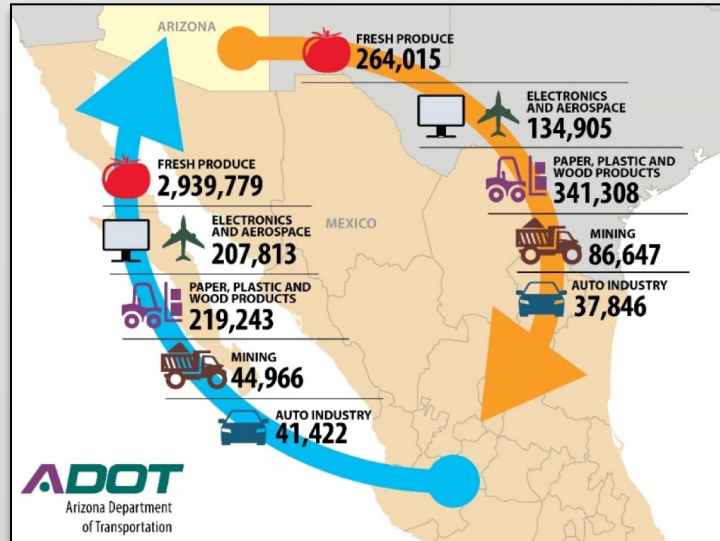
ARIZONA DEPARTMENT OF TRANSPORTATION
OFFICE OF INTERNATIONAL AFFAIRS



Arizona Infrastructure

ARIZONA DEPARTMENT OF TRANSPORTATION
OFFICE OF INTERNATIONAL AFFAIRS

Arizona-Mexico Corridor Study



Corridor Study Recommendations

- Implement new technologies and processes for truck inspections at the border.
- Coordination and dialogue with industry on both sides of the border.
- Expand the use of voluntary trusted-traveler and trusted-shipper programs.
- Investments in land port of entry and regional infrastructure.

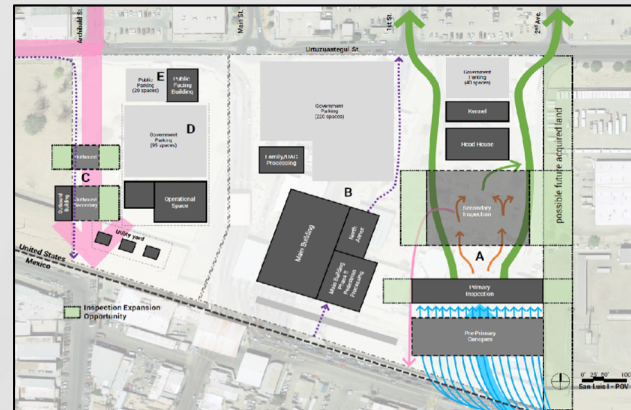
Implementation of recommendations is underway and demonstrating tremendous results

- Border Liaison Unit
- Modernization of State Route 189
- Touchless Border Initiative



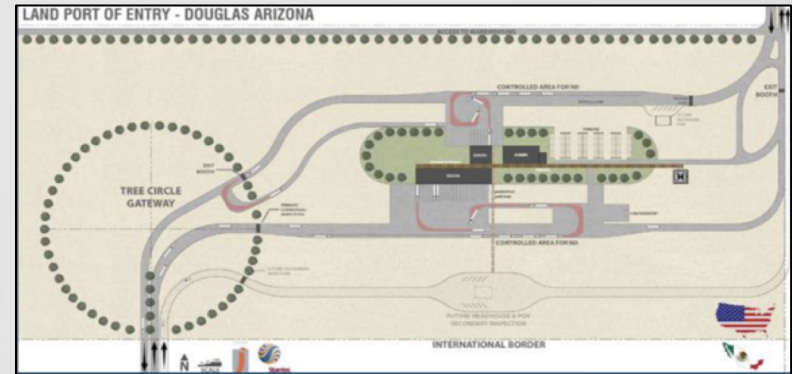


Modernization of San Luis I/San Luis Rio Colorado I



An Additional \$90 million for full buildout of the project
\$152.4 million already allocated by Congress in FY2020.

Douglas Two-Port Solution



\$325 million to build a new, state-of-the-art commercial port of entry, and modernize the existing facilities at the Raul H. Castro port of Entry



Modernization of Nogales DeConcini



Asking for GSA / CBP to conduct a feasibility study to kick-off the modernization process.



Pavement condition examples across Arizona

Good



I-10 — Near Tucson

Fair



I-19 — Near Benson

Poor



US 180 — Near Eager



Categories of highway need and investment

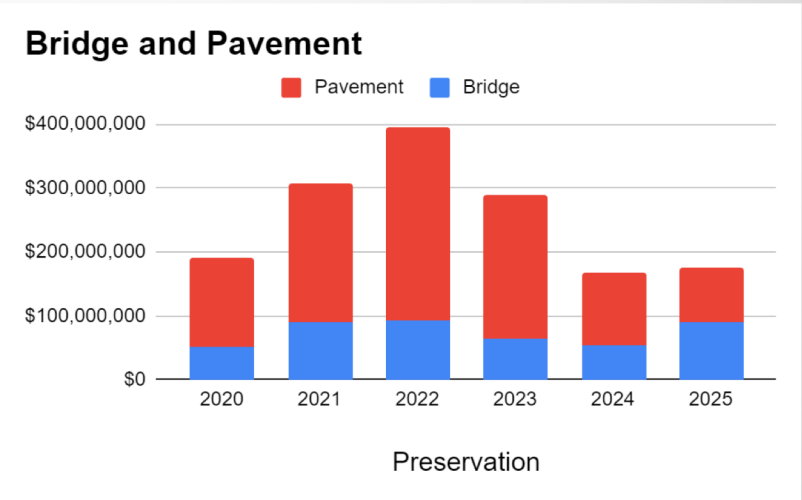
- **Preservation:** Investment to keep pavement smooth and maintain existing infrastructure
- **Modernization:** Non-capacity improvements for safety or operations — adding shoulders or smart technology
- **Expansion:** Investment that adds capacity to the highway system — building new roadways, lanes and interchanges



Bridge and Pavement Preservation

Maintaining Current Conditions

Combining the Pavement and Bridge preservation values for maintaining current conditions (2019/2018), and adding 15% for development and construction management costs gives the following.

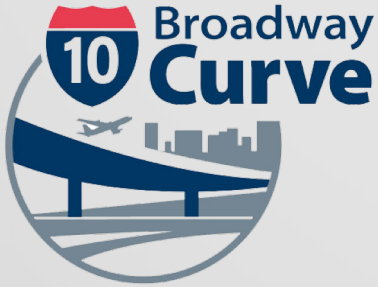




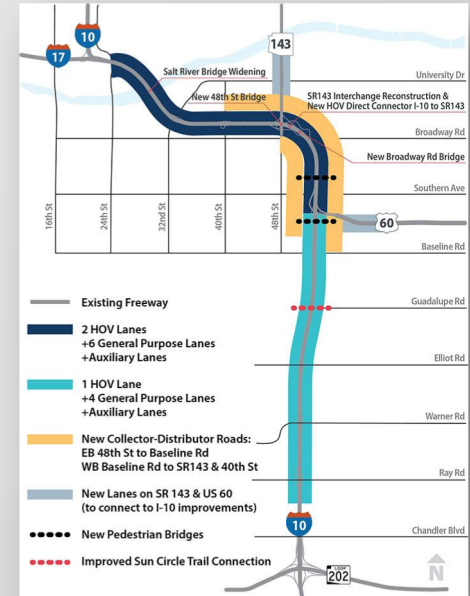
Current projects and studies

ARIZONA DEPARTMENT OF TRANSPORTATION
OFFICE OF INTERNATIONAL AFFAIRS

I-10 Broadway Curve Improvement Project



- Widens I-10 to six lanes and two HOV lanes in each direction (US 60 to I-17), and adds fourth lane in each direction between US 60 and Ray Road
- Reconstructs I-10/SR 143 interchange
- Adds collector/distributor roads from Baseline Road to 40th Street
- Construction to begin late summer/fall
- Anticipated completion in late 2024



State Route 189

- Widens approximately three miles of SR 189 near the Mariposa Port of Entry
- Constructs new roundabout at SR 189 and Target Range Road
- Constructs new flyover ramps connecting SR 189 to Interstate 19
- Improves drainage, traffic signals
- Anticipated completion in October 2021



I-17 Improvements — Anthem Way to Sunset Point

- Adds general purpose lanes (one in each direction) from Anthem Way to Black Canyon City
- Builds flex lanes from Black Canyon City to Sunset Point
- Installs additional intelligent transportation systems along the corridor
- Includes bridge preservation to some existing structures
- Currently scheduled to begin in 2022 and last up to 3.5 years



Interstate 11 Tier 1 EIS — Nogales to Wickenburg

- Final Tier 1 EIS expected to be published this summer.
 - Will include a 30-day public review period.
 - Will include the Preferred Corridor Alternative and compare it against the No-Build Option.
- Tier 1 EIS study expected to be completed by late 2021 with a Record of Decision (ROD) by FHWA.
 - ROD will include the Selected Corridor Alternative or No-Build Option.
- If a Build Alternative moves forward additional Tier 2 studies would identify a specific route/alignment (~400 feet wide).
- Tier 2 studies currently not scheduled or funded, and would be done in priority sections if a Build option is selected.

I-11 Draft Tier 1 Recommended Corridor Alternative



Draft corridor recommendation identified in 2019. Final corridor subject to change in Final EIS.

North-South Corridor Study

- Proposed new 55-mile highway corridor between US 60 in Apache Junction and I-10 in Eloy
- Includes a proposed future extension of SR 24 to the North-South corridor
- Final EIS/Record of Decision planned for release in summer 2021 to identify the selected alternative
- Currently, there is no funding identified to build a North-South corridor, or for a Tier 2 study

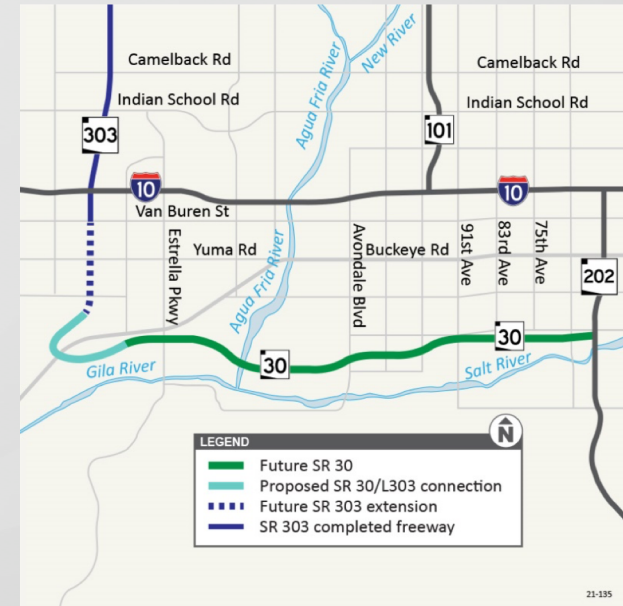


Draft corridor recommendation identified in draft EIS. Final preferred corridor subject to change in Final EIS.



SR 30 (Tres Rios Freeway) — Loop 303 to Loop 202

- Envisioned as an I-10 reliever for the West Valley
- Received environmental clearance November 2019
- Right of way acquisition underway
- Not currently funded for design/construction

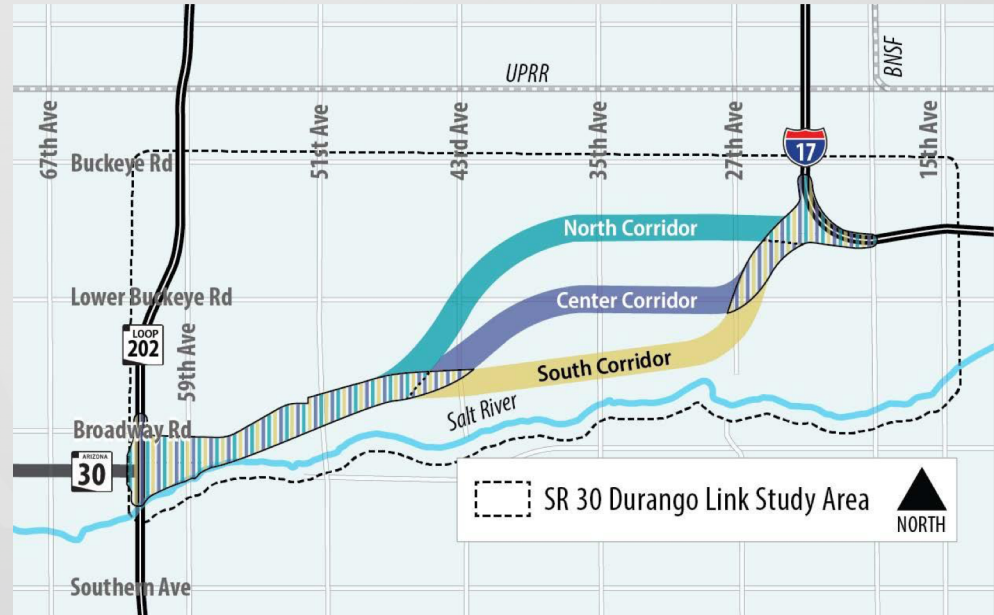




SR 30 (Tres Rios Freeway) — Loop 202 to I-17

Durango Link Section

- Corridor study underway by MAG





THANK YOU!

John Halikowski

Director

Arizona Department of Transportation

ARIZONA DEPARTMENT OF TRANSPORTATION
OFFICE OF INTERNATIONAL AFFAIRS